

FLEXTOOL PORTASCREED[®] FPS-3

Featuring high-frequency vibration across the entire width of the extrusion blade, the Flextool PortaScreed FPS-3 delivers accurate and high-quality screeding that is much faster than traditional screeding methods. The PortaScreed has been optimised to improve operator comfort and efficiency, incorporating handle vibration isolators for reduced vibration transfer to the operator, a fully adjustable twin-handle system for easy height adjustment and a sturdy spring-loaded kickstand for straightforward refuelling and storage.



FOR MORE INFORMATION

CONTACT US ON 1300 353 986 OR VISIT flextool.com.au

PRODUCT & PERFORMANCE SPECIFICATIONS



FLEXTOOL PORTASCREED®

Model	Operating Weight (kg)	Engine Make	Engine Model	Max Rated Power (hp)	Fuel Type	Product Code
FPS-3	16	Honda	GX35	1.5	P	FT201833-UNIT

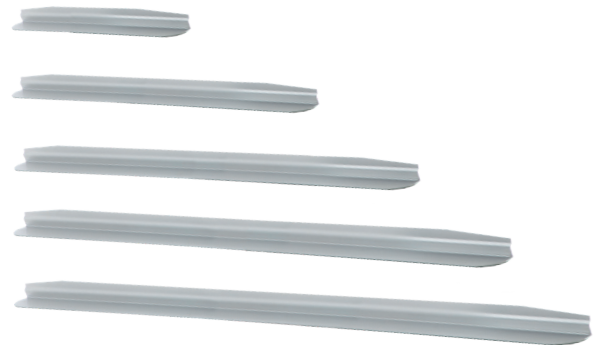


PortaScreed FPS-3

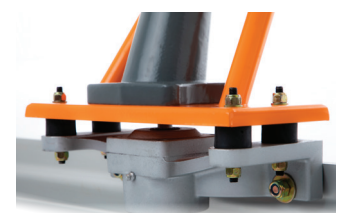
* Extrusion blades sold separately.

FLEXTOOL PORTASCREED® – EXTRUSION BLADES (Sold separately)

Length (mm)	Weight (kg)	Product Code
1200	2.9	FT201811-UNIT
2400	5.8	FT201812-UNIT
3000	7.3	FT201813-UNIT
3600	8.7	FT201814-UNIT
4800	10.2	FT201815-UNIT



Spring-loaded kickstand



Extrusion blade connection

Version 2.0 (June 2022)



THE FLEXTOOL PROMISE

If the unexpected happens and something goes wrong with your Flextool equipment within the first 12 months of purchase, we'll arrange to give you a loan machine for 2 days, free of charge, while we work to repair or replace your Flextool product.*

flextool.com.au/flextool-promise

*Qualification criteria apply. Terms and conditions for the Flextool Promise can be found at flextool.com.au.

This Technical Data Sheet (TDS) summarises our best knowledge of the product, based on the information available at the time. You should read this TDS carefully and consider the information in the context of how the product will be used. Our responsibility for products sold is subject to our standard terms and conditions of sale. Parchem does not accept any liability either directly or indirectly for any losses suffered in connection with the use of the product whether or not in accordance with any advice, specification, recommendation or information given by it.

© This publication is copyright. All rights are reserved. Flextool and PortaScreed are registered trade marks of Parchem Construction Supplies Pty Ltd.