

EXPOSE XA



FINDURO
by **NULK**

DESCRIPTION

Expose XA is an advanced concrete surface retarder that is uniquely formulated to allow the subsurface to harden while retarding the surface layer. This unique feature allows easy and consistent surface washing which significantly reduces the failure of aggregate bond in the exposed surface.

USES

- Surface retarder for freshly laid concrete
- Decorative exposed aggregate concrete
- Structural concrete to receive bonded overlays

FEATURES AND BENEFITS

- Controlled depth of penetration
- Fast same-day washing
- Treated surface can be removed by high-pressure wash
- VOC compliant
- Ready to use
- Clean up with water
- Alternative to mechanical abrasion for bonding subsequent concrete overlays

APPLICATION GUIDELINES

Surface Preparation

Assess the application area so that a fixed volume of material can be applied over a fixed area to determine the correct application rate.

Agitate the material until thoroughly mixed to ensure consistent retarding properties.

Apply Expose XA with low pressure spray unit, at sufficient rate to achieve consistent coverage.

Place concrete, screed and trowel using sound techniques to ensure consistent aggregate depth for best results.

Trowel finish the concrete surface to compact and provide an even substrate to work with and ensure a consistent final result.

Application Method

Apply Expose XA to trowel finished surfaces after the bleed water has dissipated but before the final 'set' has occurred.

Spray Expose XA to the surface in a consistent rate of approx 4-5m²/L ensuring even coverage to entire area, using two light coats in preference to one thick coat to avoid excessive pooling and runs on sloped finishes.

Allow the material to fully penetrate the concrete surface.

Check the tackiness of surface before washing by undertaking 'S' test, by running fingers over the surface with medium pressure to check the surface curing is sufficiently firm to proceed.

Assess various sections for curing rate prior to proceeding with washing as areas of full sun or shade will cure at different rates.

Wash the surface with suitable pressure via hose or pressure washer with a turbo head to achieve a consistent finish at the desired level of aggregate exposure. If washing on the same day minimal brushing should be required, weather dependent.

Cure the concrete as per recommended curing techniques when sufficiently free of pooling water.

IMPORTANT NOTES / LIMITATIONS

Although consistent depth of exposure is expected, best practice is to avoid allowing the product to pool at drains as this may lead to an aggressive and inconsistent exposure of aggregate.

When applying Expose XA in bright light conditions, it is advised to observe the application at various angles to ensure consistent application has been achieved.

Pressure washing must be undertaken with a suitable tip and at an appropriate angle to avoid concentrated pressure on one area to avoid heavy washouts.

Always do a test patch to confirm the required results are achieved, particularly when using the product for the first time.

APPLICATION CONDITIONS

Hot or cold conditions do not have a great effect on expected finished result, but the assessment of concrete curing time and application needs to be judged correctly. In hot conditions, faster curing will occur, so generally will be able to be washed sooner. For cold conditions, normal anticipated wash times can be expected.

To concrete in full sun, apply to areas in direct sun sooner than that in the shade so concrete does not cure too quickly before application.

In areas of shade, concrete will cure at a slower rate, so apply Expose XA to shaded areas at a later time than areas of direct sun.

Windy conditions can cause a drying effect of Expose XA retarder on the surface or cause ineffective spray application, meaning the need to ensure consistency of product application and rate is paramount.

Ensure material is applied prior to any rain or Expose XA will be diluted and penetration will not be consistent.

Avoid overspray and protect adjacent curing concrete as it will cause surface to be retarded also with no remedy.

CURING TIME

Drying time is dependent on the temperature. Washing of surface is usually able to be undertaken between 2-14 hours after application at 25°C.

Accessible to foot traffic and light machinery immediately after cleaning the surface.

ESTIMATING DATA

Coverage 4-5m²/L Theoretical coverage is 80-100m² per 20 litre drum.

The properties of the substrate such as porosity and profile will influence the coverage rate and number of coats required.

CLEAN UP

Clean tools and equipment thoroughly with clean water before they dry.

PACKAGING

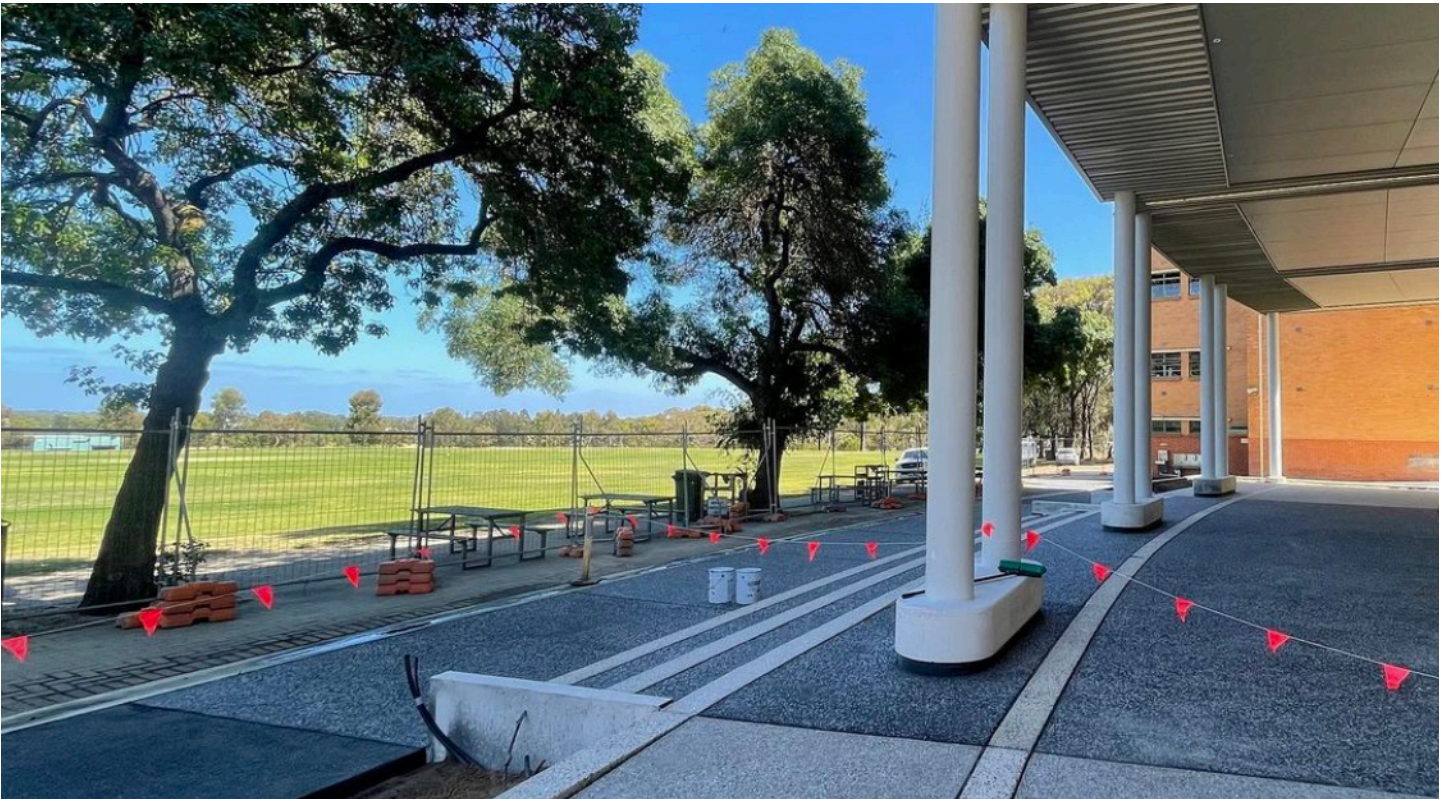
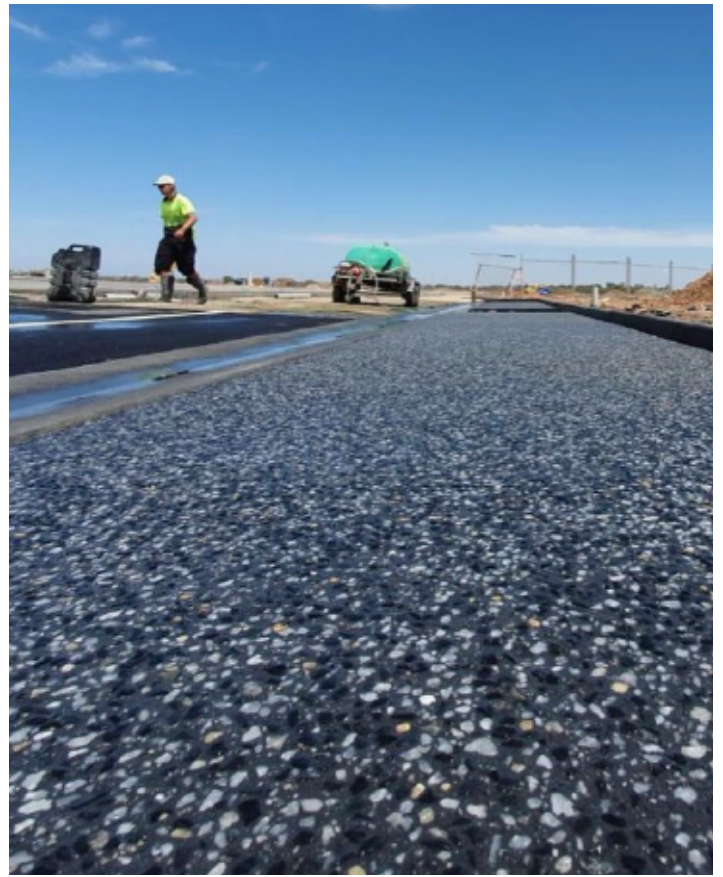
20L plastic cube

SHELF LIFE

12 months in unopened, factory sealed container, stored safely at temperatures between 5°C-35°C.

SAFETY PRECAUTIONS

Always wear adequate personal protection during use including gloves, eye protection, overalls and appropriate mask. Apply in adequate ventilation. Refer to Material Safety Data Sheet for further safety information.



DISCLAIMER / STATEMENT OF RESPONSIBILITY

Purchase or use of the product referred above ('the Product') constitutes acceptance of these terms. Any information provided by Vulk Pty Ltd ('Vulk') is of a general nature and should not be taken as advice and is, to the extent permitted by law, provided without warranty as to the accuracy, reliability or completeness of that information. Further, no warranty is provided in respect to the quality, suitability or fitness for purpose of the Product. Expert advice should be taken in respect to any use of the Product.

So far as is permitted by law, any party purchasing or using the Product indemnifies Vulk against and releases Vulk from any claim, liability, loss, cost or similar directly or indirectly arising out of the supply or use of the Product or this technical data sheet. Vulk's liability to any party is limited to cost of replacement or repair of the Product and is reduced proportionately to the extent that an act or omission of any other party contributes to the liability.

VULK.COM.AU

enquiries@vulk.com.au

5 Piping Lane Lonsdale SA 5160

Phone: 08 7120 6955

VULK

AUSTRALIA'S LEADING CONCRETE FLOORING CENTRE

MIRAFLOOR

FINDURO

AARDCURE

VULK TDS Issue June 2022 Ver FSEX.A.001