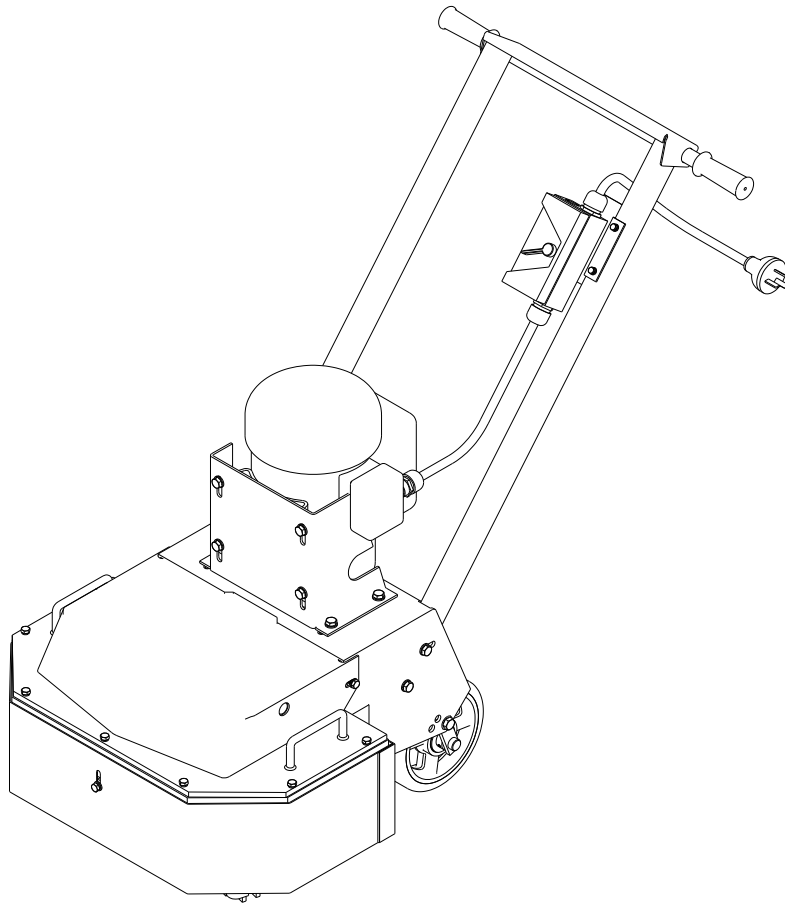


HSG-DE/SEA/SPA



Operator's Manual

Surface Grinder

EC DECLARATION OF CONFORMITY / DECLARATION CE DE CONFORMITE / DECLARACIÓN DE CONFORMIDAD CE / DECLARAÇÃO CE DE CONFORMIDADE

GB/US

We, **Uni-corp Singapore, 20 Ang Mo Kio Industrial Park 2A, #03-02/03 AMK Techlink Singapore 567761**, hereby certify that if the product described within this certificate is bought from an authorised Hoppt dealer within the EEA, it conforms to the following directives: Machinery Directive 2006/42/EC, Electromagnetic Compatibility Directive 2004/108/EC (as amended by 92/31/EEC & 93/68 EEC). The physical agent (vibration) conforms with the directive 2002/44/EC. The low voltage directive 2006/95/EC, BS EN ISO 12100-1/2 Safety of machinery and associated harmonised standards, where applicable. Noise emissions conform to directive 2005/88/EC Annex VI, for machines under article 12 the notified body is **TÜV Rheinland Product Safety GmbH - Am Grauen Stein - D-51105 Köln, Germany**.

F

Nous soussignons, **Uni-corp Singapore, 20 Ang Mo Kio Industrial Park 2A, #03-02/03 AMK Techlink Singapore 567761**, certifions que si le produit décrit dans ce certificat est acheté chez un distributeur de la marque déposée "Hoppt" au sein de la EEA, celui-ci est conforme aux norms CEE ci-après: Norme de la machine 2006/42/CE, Norme compatible pour l'électromagnétisme 2004/108/CE (modifiée par 92/31/CEE et 93/68/CEE). Le nombre de vibrations est en accord avec la directive 2002/44/CE. Caractéristiques basse tension 2006/95/CEE, BS EN ISO 12100-1/2, Norme de sécurité des machines et des critères associés et configurés, si applicable. Les émissions de bruit sont conformes à la directive 2005/88/CE Annexe VI pour machines, article 12. L'objet mentionné est **TÜV Rheinland Product Safety GmbH - Am Grauen Stein - D-51105 Köln, Allemagne**.

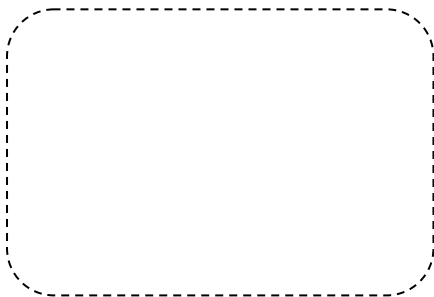
E

La Sociedad, **Uni-corp Singapore, 20 Ang Mo Kio Industrial Park 2A, #03-02/03 AMK Techlink Singapore 567761**, por el presente documento certifica que si el producto descrito en este certificado es comprado a un distribuidor autorizado de Hoppt en la EEA, este es conforme a las siguientes directivas: 2006/42/CE de la CEE, Directiva 2004/108/CEE sobre Compatibilidad Electromagnética (según enmiendas 92/31/CEE y 93/68 CEE). El numero de vibraciones esta de acuerdo con la Directiva 2002/44/CE. Directiva sobre Bajo Voltaje 2006/95/CEE, BS EN ISO 12100-1/2 de Seguridad de Maquinaria y Niveles armonizados estándares asociados donde sean aplicables. Emisión de Ruidos conforme a la Directiva 2005/88/CE Anexo VI para máquinas bajo artículo 12 la mencionada unidad está **TÜV Rheinland Product Safety GmbH - Am Grauen Stein - D-51105 Köln, Germany**.

P

O signatário, **Uni-corp Singapore, 20 Ang Mo Kio Industrial Park 2A, #03-02/03 AMK Techlink Singapore 567761**, pelo presente, declara que se o produto descrito neste certificado foi adquirido a um distribuidor autorizado do Hoppt em qualquer país da EEA, está em conformidade com o estabelecido nas seguintes directivas comunitárias: 2006/42/CE, Directiva de Compatibilidade Electromagnética 2004/108/CEE (conforme corrigido pelas 92/31/EEC & 93/68 EEC). O numero de vibrações está de acordo com a directiva 2002/44/CE LB. A directiva de baixa voltagem 2006/95/CEE, BS EN ISO 12100-1/2 Segurança da maquinaria e às normas harmonizadas afins se aplicáveis. As emissões de ruído respeitam e estão dentro das directivas para máquinas 2005/88/CE Anexo VI, artigo 12, sendo o organismo notificado **TÜV Rheinland Product Safety GmbH - Am Grauen Stein - D-51105 Köln, Germany**.

PRODUCT TYPE.....	TYPE DE PRODUIT....	TIPO DE PRODUCTO..	TIPO DE PRODUCTO..
MODEL.....	MODELE.....	MODELO.....	MODELO.....
SERIAL No.....	Nº DE SERIE.....	Nº DE SERIE.....	Nº DE SÉRIE.....
DATE OF	DATE DE	FECHA DE	DATA DE
MANUFACTURE.....	FABRICATION.....	FABRICACIÓN.....	FABRIC.....
WEIGHT.....	POIDS.....	PESO.....	PESO.....



Signed by:

Quality Manager - On behalf of Uni-corp Singapore PTE Ltd

Anita Tan

Foreword

This manual has been written to help you operate your Surface Grinder safely. It is intended primarily for dealers and operators of Hoppt Surface Grinders. It is recommended that you keep this manual or a copy of it with the machine so that it is readily available for reference.

Before you operate or carry out any maintenance on this machine YOU MUST READ and UNDERSTAND this manual.

Should you have ANY QUESTIONS about the safe use or maintenance of this machine after reading this manual, ASK YOUR SUPERVISOR or CONTACT:

Uni-corp Singapore on +65 6756 7688

Hoppt reserves the right to change machine specification without prior notice or obligation.

Directions with regard notations

Text in this manual to which special attention must be paid are shown in the following way:



CAUTION

This CAUTION sign indicates a potential hazard, which if ignored, could result in injuries to the operator and/or those close by, as well as damaging the machine.



WARNING

This WARNING sign indicates a potential hazard, which if ignored could result in the DEATH of the operator and/or those close by.

Contents

Foreword.....	2
Safety Information	3-5
Machine Description	5-6
Pre-Start Checks	7
Start And Stop Procedure.....	7
Operation	8
Service and Maintenance	8
Technical Data.....	9
Transportation and Storage.....	9
Warranty	10

Safety Information

For your own personal protection and for the safety of those around you, please read and ensure you fully understand the following safety information. It is the responsibility of the operator to ensure that he/she fully understands how to operate this equipment safely. If you are unsure about the safe and correct use of the Surface Grinder, consult your supervisor or Hoppt.



CAUTION

Improper maintenance can be hazardous. Read and understand this section before you perform any maintenance, service or repairs.

General Safety

- The owner of this machine must observe, and also train the user of the machine to observe, the effective labour protection laws in the country of application.
- This machine is to be used for its intended application only.
- This machine must only be operated by well-trained personnel.
- Personal Protective Equipment (PPE) must be worn by the operator whenever the equipment is being used.
- Cordon off the work area and keep members of the public and unauthorised personnel at a safe distance.
- Make sure you know how to safely switch this machine OFF before you switch it ON in case you run into any difficulties.
- Always switch OFF the engine before servicing it.
- During use, the engine becomes very hot. Always allow the engine to cool down before touching it.
- Never leave the engine running and unattended.
- Never remove or tamper with any fitted guards; they are there for your own protection. If they are damaged or missing, DO NOT USE THE MACHINE until the guard has been replaced or repaired.
- Always switch OFF the engine before transporting it, moving it around site or servicing it.
- Do not operate the machine when you are ill, feeling tired or when under the influence of alcohol or drugs.
- This machine is designed to eliminate the possible risks arising from the use of it. However, risks DO reside, and these residual risks are not clearly recognisable and may cause personal injury or property damage, and possibly death. If such unpredictable and unrecognisable risks become apparent, the machine must be stopped immediately, and operator or his supervisor must take appropriate measure to eliminate such risks. It is sometimes necessary that the manufacturer must be informed of such an event for future counter measuring.

Fuel Safety - for users of the HSG-SPA



Fuel is flammable. It may cause injury and property damage. Shut down the engine, extinguish all open flames and do not smoke while filling the fuel tank. Always wipe up any spilled fuel.

- Before re-fuelling, switch off the engine and allow it to cool.
- When re-fuelling, use a proper funnel, and avoid spilling over the engine.
- When re-fuelling, DO NOT smoke or allow naked flames in the area.
- Spilt fuel must be made safe immediately by using sand. If fuel is spilt on your clothes, change them.
- Store fuel in an approved, purpose made container away from heat and sources of ignition.
- Do not ingest fuel or inhale fuel vapors and avoid contact with your skin. Wash fuel splashes immediately. If you get fuel in your eyes, irrigate with copious amounts of water and seek medical attention as soon as possible.

Exhaust Fumes



The exhaust fumes produced by this machine are highly toxic and can kill! Make sure the work area is adequately ventilated.

PPE (Personal Protective Equipment)

Suitable PPE must be worn when using this equipment i.e. safety goggles, gloves, ear defenders, dust mask and steel toe-capped footwear (with anti-slip soles for added protection). Wear clothing suitable for the work you are doing.

Environment

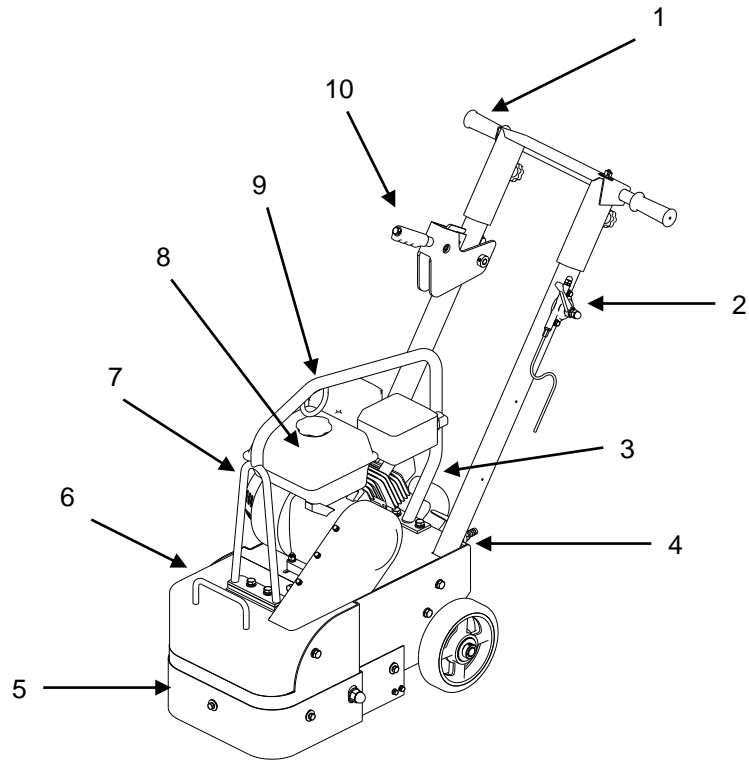


In order to protect the environment please recycle any discarded apparatus or accessories. Various parts are made from steel, aluminium and rubber. Take the discarded apparatus to the relevant recycling facilities.

Machine Description

HSG-SPA

1. Cushioned Hand Grips
2. Throttle
3. Vacuum Port
4. Water Valve
5. Dust Skirt
6. Lifting Point
7. Recoil Starter
8. Fuel Tank (Gasoline)
9. Hoisting Point
10. Disc Height Adjustment
Lever



Pre-Start Checks

1. Check that the discs are suitable for the type of work being carried out.
2. Make sure that the wheel mountings are clean and the bolts are securely tightened.
3. Check for adequate water flow if wet grinding is being performed.
4. Carry out all required maintenance checks.

Start and Stop Procedure



CAUTION

Improper operation can be hazardous. Read and understand this section before you start the machine.

Before starting the engine or turning on the power, ensure the front of the machine is raised clear of the working surface (HSG-DE) or that the disc height adjustment lever is in its highest position so that the discs will not come into contact with the working surface (HSG-SEA and HSG-SPA).

For Electric Motor - Models HSG-DE and HSG-SEA

Firmly grasp the handlebars and turn the power switch to the 'ON' position. Return it to the 'OFF' position to stop.

For Gasoline Engine - Model HSG-SPA

1. Open the petrol tap by moving the fuel **ON/OFF** lever fully to the right.
2. If starting the engine from cold, set the choke ON by moving the choke lever fully to the left. If restarting a warm engine, the choke is usually not required; however, if the engine has cooled to a degree, partial choke may be required.
3. Turn the engine **ON / OFF** switch clockwise to the 'I' position.
4. Set the throttle to the idle position by moving the throttle lever fully to the right. Do not start the engine on full throttle.
5. Taking a firm hold of the control handle and set the centrifugal switch to **ON** if not already, grasp the recoil starter handle with the other. Pull the recoil starter until engine resistance is felt, then let starter return.
6. Taking care not to pull the starter's rope fully out, pull the starter handle briskly.
7. Repeat until the engine fires.
8. Once the engine fires gradually set the choke lever to the **OFF** position by moving it to the right.
9. To stop the engine, set the throttle to idle and release the control switch safety switch. Alternatively turn the engine **ON/OFF** switch anti-clockwise to the 'O' position.
10. Turn the petrol off.

Operation

- Before starting the engine move the machine into your desired starting position. Before turning on the power or starting the engine, raise the machine/discs clear of the work surface.
- Follow the 'Start/Stop Procedure' to start the machine. To begin work, either gently lower the machine (HSG-DE) onto the work surface, or lower the disc height adjustment lever into the desired position (HSG-SEA and HSG-SPA). Use a slow continuous sweeping motion from left to right and back again. Never force the machine into the work as this will put the engine/motor under excessive strain which will considerably shorten the life of your machine.
- DRY GRINDING: A respirator is to be provided and a dust control system.
- WET GRINDING: Water must be used at all times; ensure there's an adequate flow. Use the valve to control the flow of water.
- When manoeuvring the grinder tilt it back enough so as to avoid contact with the slab. If contact occurs damage may occur to the discs.

Service and Maintenance



Before carrying out any maintenance on this machine ensure the engine has been switched off. The engine should also be allowed to cool as parts of the engine become hot during use.

	Before Operation	Every 4 Hours	Every 50 Hours	As Required
Visual Inspection of machine	✓			
Inspect Drive Belts	✓			
Inspect Grinding Discs	✓			
Grease Bearings			✓	
Belt Tensioning				✓
Clean Dirt and Dust off Machine				✓

Note: When servicing the engine please refer to the engine manual for instructions.

Technical Data

Model	HSG-SPA
Dimension (LxWxH) - mm (in)	1.092x610x965 (43x24x38)
Operating Weight - kg(lbs)	105 (232)
No. of Discs	1
Working Width - mm (in)	296 (11.6)
Working Speed - rpm	360
Working Capability - m ² /h (ft ² /h)	20-25 (215-269)
Power Source	Honda GX 160
Max. Power Output - hp (kW)	5.5 (4)

Transportation and Storage

- When it is not used for long periods of time Surface Grinder in a clean, dry and protected environment.
- When transporting, ensure the Surface Grinder is safe against damage occurring as a result of slipping, overturning and sudden impact. Always transport the engine in an upright position.
- Never transport the unit while the engine is running even if it is only for a short distance.
- In the case of the HSG-SPA: If you do not use the engine for more than a month, discharge the fuel in order to prevent the build up of gum in the fuel system and carburetor parts (refer to engine manual for instructions).
- When transporting the Surface Grinder it should always be rolled where possible. If lifting is necessary, seek help. Never try to lift the machine by yourself.

Warranty

Your new Hoppt Surface Grinder is warranted to the original purchaser for a period of one-year (12 months) from the original date of purchase.

The Hoppt warranty covers defects in design, materials and workmanship.

The following are not covered under the Hoppt warranty:

1. Damage caused by abuse, misuse, dropping or other similar damage caused by or as a result of failure to follow assembly, operation or user maintenance instructions.
2. Alterations, additions or repairs carried out by persons other than Hoppt or their recognised agents.
3. Transportation or shipment costs to and from Hoppt or their recognised agents, for repair or assessment against a warranty claim, on any machine.
4. Materials and/or labour costs to renew, repair or replace components due to fair wear and tear.
5. The engine/motor, air filter and the engine spark plug.

Hoppt and/or their recognised agents, directors, employees or insurers will not be held liable for consequential or other damages, losses or expenses in connection with or by reason of or the inability to use the machine for any purpose.

Warranty Claims

All warranty claims should firstly be directed to the local dealer, either by telephone, by fax, by email, or in writing.

Liability

HOPPT declines any liability for possible damages to persons and/or things, which might arise from improper or wrong use of the machine or non-observance of the operating instructions in this manual.

USE ONLY GENUINE HOPPT PARTS AND ACCESSORIES!

For your own safety, the safety of others and the life of the machine.


Notes


Notes



Uni-corp (Singapore) PTE Ltd

20 Ang Mo Kio Industrial Park 2A,
#03-02/03 AMK Techlink Singapore 567761

 +65 6756 7688

 +65 6756 7088

 sales@uni-corp.com

 www.uni-corp.com

