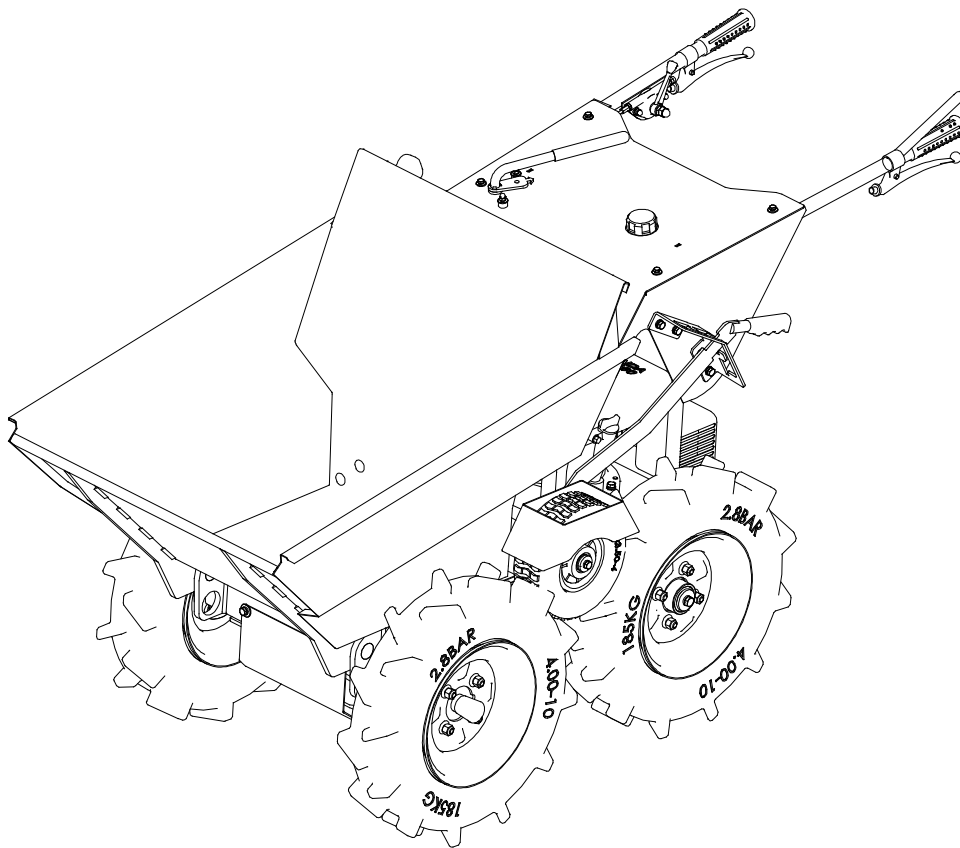




HTL350



Operator's Manual

Terrain Loader

EC DECLARATION OF CONFORMITY / DECLARATION CE DE CONFORMITE / DECLARACIÓN DE CONFORMIDAD CE / DECLARAÇÃO CE DE CONFORMIDADE

GB/US

We, **Uni-corp Singapore, 20 Ang Mo Kio Industrial Park 2A, #03-02/03 AMK Techlink Singapore 567761**, hereby certify that if the product described within this certificate is bought from an authorised Hoppt dealer within the EEA, it conforms to the following directives: Machinery Directive 2006/42/EC, Electromagnetic Compatibility Directive 2004/108/EC (as amended by 92/31/EEC & 93/68 EEC). The physical agent (vibration) conforms with the directive 2002/44/EC. The low voltage directive 2006/95/EC, BS EN ISO 12100-1/2 Safety of machinery and associated harmonised standards, where applicable. Noise emissions conform to directive 2005/88/EC Annex VI, for machines under article 12 the notified body is **TÜV Rheinland Product Safety GmbH - Am Grauen Stein - D-51105 Köln, Germany**.

F

Nous soussignons, **Uni-corp Singapore, 20 Ang Mo Kio Industrial Park 2A, #03-02/03 AMK Techlink Singapore 567761**, certifions que si le produit décrit dans ce certificat est acheté chez un distributeur de la marque déposée "Hoppt" au sein de la EEA, celui-ci est conforme aux norms CEE ci-après: Norme de la machine 2006/42/CE, Norme compatible pour l'électromagnétisme 2004/108/CE (modifiée par 92/31/CEE et 93/68/CEE). Le nombre de vibrations est en accord avec la directive 2002/44/CE. Caractéristiques basse tension 2006/95/CEE, BS EN ISO 12100-1/2, Norme de sécurité des machines et des critères associés et configurés, si applicable. Les émissions de bruit sont conformes à la directive 2005/88/CE Annexe VI pour machines, article 12. L'objet mentionné est **TÜV Rheinland Product Safety GmbH - Am Grauen Stein - D-51105 Köln, Allemagne**.

E

La Sociedad, **Uni-corp Singapore, 20 Ang Mo Kio Industrial Park 2A, #03-02/03 AMK Techlink Singapore 567761**, por el presente documento certifica que si el producto descrito en este certificado es comprado a un distribuidor autorizado de Hoppt en la EEA, este es conforme a las siguientes directivas: 2006/42/CE de la CEE, Directiva 2004/108/CEE sobre Compatibilidad Electromagnética (según enmiendas 92/31/CEE y 93/68 CEE). El numero de vibraciones esta de acuerdo con la Directiva 2002/44/CE. Directiva sobre Bajo Voltaje 2006/95/CEE, BS EN ISO 12100-1/2 de Seguridad de Maquinaria y Niveles armonizados estándares asociados donde sean aplicables. Emisión de Ruidos conforme a la Directiva 2005/88/CE Anexo VI para máquinas bajo artículo 12 la mencionada unidad está **TÜV Rheinland Product Safety GmbH - Am Grauen Stein - D-51105 Köln, Germany**.

P

O signatário, **Uni-corp Singapore, 20 Ang Mo Kio Industrial Park 2A, #03-02/03 AMK Techlink Singapore 567761**, pelo presente, declara que se o produto descrito neste certificado foi adquirido a um distribuidor autorizado do Hoppt em qualquer país da EEA, está em conformidade com o estabelecido nas seguintes directivas comunitárias: 2006/42/CE, Directiva de Compatibilidade Electromagnética 2004/108/CEE (conforme corrigido pelas 92/31/EEC & 93/68 EEC). O numero de vibrações está de acordo com a directiva 2002/44/CE LB. A directiva de baixa voltagem 2006/95/CEE, BS EN ISO 12100-1/2 Segurança da maquinaria e às normas harmonizadas afins se aplicáveis. As emissões de ruído respeitam e estão dentro das directivas para máquinas 2005/88/CE Anexo VI, artigo 12, sendo o organismo notificado **TÜV Rheinland Product Safety GmbH - Am Grauen Stein - D-51105 Köln, Germany**.

PRODUCT TYPE.....	TYPE DE PRODUIT....	TIPO DE PRODUCTO..	TIPO DE PRODUCTO..
MODEL.....	MODELE.....	MODELO.....	MODELO.....
SERIAL No.....	Nº DE SERIE.....	Nº DE SERIE.....	Nº DE SÉRIE.....
DATE OF	DATE DE	FECHA DE	DATA DE
MANUFACTURE.....	FABRICATION.....	FABRICACIÓN.....	FABRIC.....
WEIGHT.....	POIDS.....	PESO.....	PESO.....



Signed by:

Quality Manager - On behalf of Uni-corp Singapore PTE Ltd

Anita Tan

Foreword

This manual has been written to help you operate your Terrain Loader safely. It is intended primarily for dealers and operators of Hoppt Terrain Loaders. It is recommended that you keep this manual or a copy of it with the machine so that it is readily available for reference.

Before you operate or carry out any maintenance on this machine YOU MUST READ and UNDERSTAND this manual.

Should you have ANY QUESTIONS about the safe use or maintenance of this machine after reading this manual, ASK YOUR SUPERVISOR or CONTACT:

Uni-corp Singapore on +65 6756 7688

Hoppt reserves the right to change machine specification without prior notice or obligation.

Directions with regard notations

Text in this manual to which special attention must be paid are shown in the following way:



CAUTION

This CAUTION sign indicates a potential hazard, which if ignored, could result in injuries to the operator and/or those close by, as well as damaging the machine.



WARNING

This WARNING sign indicates a potential hazard, which if ignored could result in the DEATH of the operator and/or those close by.

Contents

Foreword.....	2
Safety Information	3-4
Environment	4
Machine Description	5
Pre-Start Checks	6
Start And Stop Procedure.....	6
Operation	7
Transportation and Storage.....	7
Service and Maintenance	8-9
Troubleshooting	9
Technical Data.....	10
Warranty	11

Safety Information

For your own personal protection and for the safety of those around you, please read and ensure you fully understand the following safety information. It is the responsibility of the operator to ensure that he/she fully understands how to operate this equipment safely. If you are unsure about the safe and correct use of the Terrain Loader, consult your supervisor or Hoppt.



CAUTION

Improper maintenance can be hazardous. Read and understand this section before you perform any maintenance, service or repairs.

General Safety

- The owner of this machine must observe, and also train the user of the machine to observe, the effective labour protection laws in the country of application.
- This machine is to be used for its intended application only.
- This machine must only be operated by well-trained personnel and Personal Protective Equipment (PPE) must be worn by the operator whenever the equipment is being used.
- Make sure you know how to safely switch this machine OFF before you switch it ON in case you run into any difficulties.
- During use, the engine becomes very hot. Always allow the engine to cool down before touching or servicing it and never leave the engine running unattended.
- Never remove or tamper with any fitted guards; they are there for your own protection. If they are damaged or missing, DO NOT USE THE MACHINE until the guard has been replaced or repaired.
- Do not stand the machine on end with the engine running.
- Do not use the Terrain Loader to transport people.
- Do not release the brake suddenly when travelling forward at speed with a heavy load as the machine may topple forward.
- When travelling downhill, engage the reverse gear with the clutch lever fully engaged and parking brake lever pressed down (brake off). Close the throttle if necessary so that engine braking controls the speed.
- Always ensure that when moving downwards on a hill, the machine is travelling in reverse. Do not operate the machine when you are ill, feeling tired or when under the influence of alcohol or drugs.
- This machine is designed to eliminate the possible risks arising from the use of it. However, risks DO reside, and these residual risks are not clearly recognisable and may cause personal injury or property damage, and possibly death. If such unpredictable and unrecognisable risks become apparent, the machine must be stopped immediately, and operator or his supervisor must take appropriate measure to eliminate such risks. It is sometimes necessary that the manufacturer must be informed of such an event for future counter measuring.

Fuel Safety



Fuel is flammable. It may cause injury and property damage. Shut down the engine, extinguish all open flames and do not smoke while filling the fuel tank. Always wipe up any spilled fuel.

- Before re-fuelling, switch off the engine and allow it to cool.
- When re-fuelling, use a proper funnel, and avoid spilling over the engine.
- When re-fuelling, DO NOT smoke or allow naked flames in the area.
- Spilt fuel must be made safe immediately by using sand. If fuel is spilt on your clothes, change them.
- Store fuel in an approved, purpose made container away from heat and sources of ignition.
- Do not ingest fuel or inhale fuel vapors and avoid contact with your skin. Wash fuel splashes immediately. If you get fuel in your eyes, irrigate with copious amounts of water and seek medical attention as soon as possible.

Exhaust Fumes



The exhaust fumes produced by this machine are highly toxic and can kill! Make sure the work area is adequately ventilated.

PPE (Personal Protective Equipment)

Suitable PPE must be worn when using this equipment i.e. safety goggles, gloves, ear defenders, dust mask and steel toe-capped footwear (with anti-slip soles for added protection). Wear clothing suitable for the work you are doing.

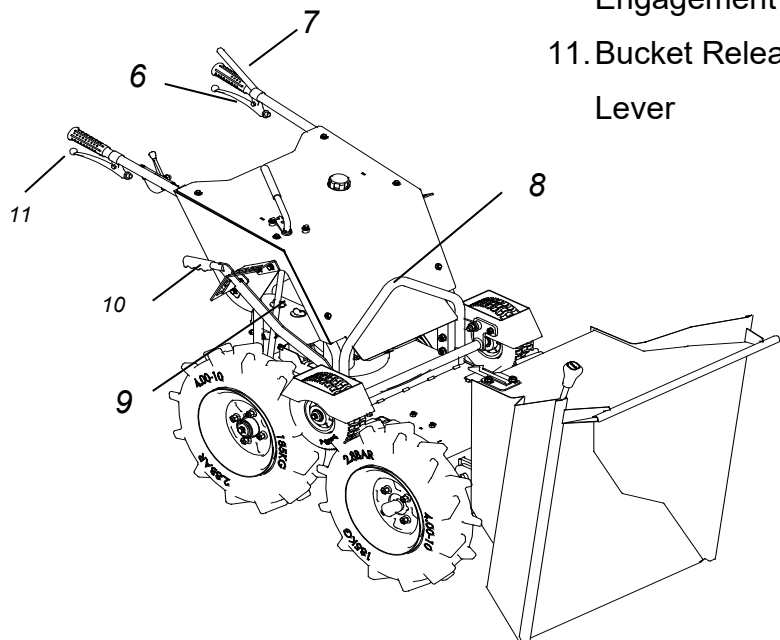
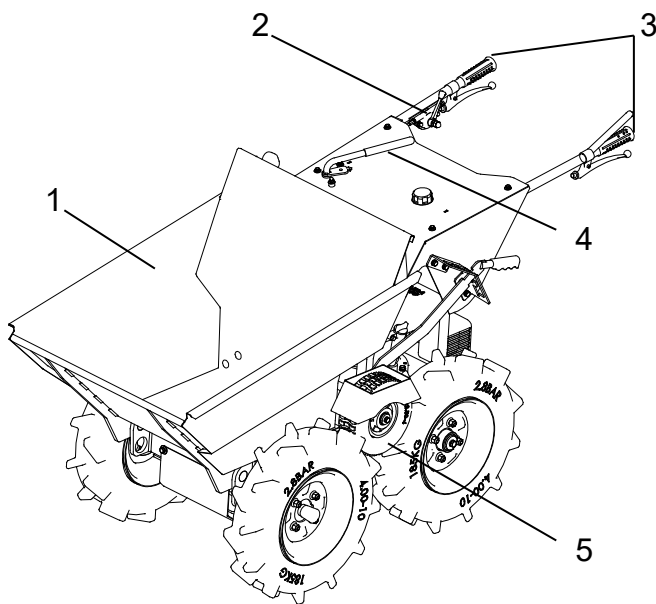
Environment



In order to protect the environment please recycle any discarded apparatus or accessories. Various parts are made from steel, aluminium and rubber. Take the discarded apparatus to the relevant recycling facilities.

Component	Material
Chassis	Steel
Hand Grips	Rubber
Handles	Steel
Engine	Aluminium and Steel
Bucket	Steel
Various Parts	Steel and Rubber
Gearbox	Aluminium, Steel and Phosphor Bronze

1. Bucket
2. Throttle
3. Handle Bars
4. Gear Lever
5. Friction Wheel



6. Drive Lever
7. Park Brake Lever
8. Lifting Point
9. Oil Fill and Dipstick
10. 4-Wheel Drive Engagement Lever
11. Bucket Release Lever

Pre-Start Checks

The following Pre-start-up inspection must be performed before the start of each work session or after every four hours of use, whichever is first. Please refer to the service section for detailed guidance. If any fault is discovered, the Terrain Loader must not be used until the fault is rectified.

1. Thoroughly inspect the Hoppt Terrain Loader for signs of damage. Check components are present and secure.
2. Check fluid lines, hoses filler openings, drain plugs and any other areas for signs of leakage. Fix any leaks before operating.
3. Check the engine oil level and top up as necessary.
4. Check the engine fuel level and top up as necessary.
5. Check for fuel and oil leaks.

Start and Stop Procedure



Improper operation can be hazardous. Read and understand this section before you start the machine.

Honda GXV 160 Gasoline Engine

Starting

1. Turn the fuel shut off valve to the ON position.
2. Move the throttle control to the choke position. Do not use the choke when the engine is warm. Move the throttle control to the **maximum RPM (Hare) position**.
3. Pull the starter grip lightly until resistance is felt, then pull briskly.

NOTE: Do not allow the starter grip to snap back against the engine. Return it gently to prevent damage to the starter.

4. If the choke was used to start the engine, move the throttle to the fast (or high) position as soon as the engine warms up enough to run smoothly without use of the choke.

Throttle Lever

5. Position the throttle control for the desired engine speed. For best engine performance, it is recommended that the engine be operated with the throttle in the fast (or high) position.

Stopping

6. Move the throttle control to the stop position. The fuel cock will automatically turn off.
7. The engine has stopped; turn the fuel valve to the OFF position if you do not intend to restart the engine soon.

Operation

Gear Selection Options

1st Gear = Climbing steep slopes, steps or ramps.

2nd Gear = Climbing slopes.

3rd Gear = Travelling on level ground when laden.

4th Gear = Travelling on level ground when unladen.

Operating the Terrain Loader

1. Start the engine.
2. With the engine running, select the gear by turning the Gear Lever to the desired position.
3. Release the brake by pressing the red Park Brake Lever down towards the operating handle and pull the Drive Lever upwards to engage drive. The machine will now begin to move.
4. Once the machine is moving the throttle can be opened or closed to increase or decrease the speed of the machine. (If more speed is required, follow steps 2, 3 and 4 but select a higher gear than is currently in use)

NOTE: The gears cannot be altered whilst the machine is in motion.



CAUTION

If it is necessary to travel down a slope of more than 15° when fully laden, ensure that the machine is turned round and reverse down the slope.

Emptying the Bucket

1. Stop the machine by releasing the Drive Lever followed by releasing the red Park Brake Lever.
2. Once the machine has become stationary compress the Bucket Release Lever and slightly lift-up the rear of the machine. The Bucket will tip forwards disposing of its contents.
3. When the Bucket is empty, push back to its original position. The **Bucket** will lock into place automatically.

Transportation and Storage

- When it is not used for long periods of time Terrain Loader in a clean, dry and protected environment.
- When transporting, ensure the Terrain Loader is safe against damage occurring as a result of slipping, overturning and sudden impact. Always transport the engine in an upright position.
- Never transport the unit while the engine is running even if it is only for a short distance.

If you do not use the engine for more than a month, discharge the fuel in order to prevent the build up of gum in the fuel system and carburetor parts (refer to engine manual for instructions).

Service and Maintenance



CAUTION

Before carrying out any maintenance on this machine ensure the engine has been switched off. The engine should also be allowed to cool as parts of the engine become hot during use.

The following tools are required for essential maintenance procedures and are not supplied with the machine.

- 17mm Socket - 19mm Socket - 14mm Plug Socket
- 10mm Spanner - 2 x 13mm Spanners - 17mm Spanner
- 19mm Spanner - Pliers

Gearbox Oil

There should be no maintenance required as this is a sealed Gearbox. If there are any signs of leakage, stop using the machine and contact your local dealer or the Hoppt.

Machine Cleaning

Clean the machine after it has been used to prevent the collection of hardened debris. Hardened debris is very difficult to remove. To clean it, use an old brush or hand brush with water.

NOTE: Never pressure wash or hose down the engine. Clean only with a cloth or compressed air.

Park Brake

The Parking Brake operates automatically when the red Parking Brake Lever is in the upright position. A spring holds the brake on until the lever is compressed to release it. Correct adjustment is critical. If the brake cable is too tight the brake spring will not be applying full pressure to the brake arm. If the brake cable is too slack, the brake may not release correctly when the lever is depressed and the brake will drag causing overheating and wear to the brake pads and damage to the gearbox.

Air Filter

If it is dirty, proceed as follows:

Foam Element - Wash the element in a solution of washing-up liquid and water. Allow the element to dry, then soak in clean engine oil and squeeze out the excess oil. If the engine smokes during start-up then too much oil has been left on the foam.

Paper Element - Tap the element on a hard surface or blow from inside using compressed air to remove any excess dust within the filter. Replace every 200 hours or if it is extremely dirty.

Note: When servicing the engine please refer to the engine manual for instructions.

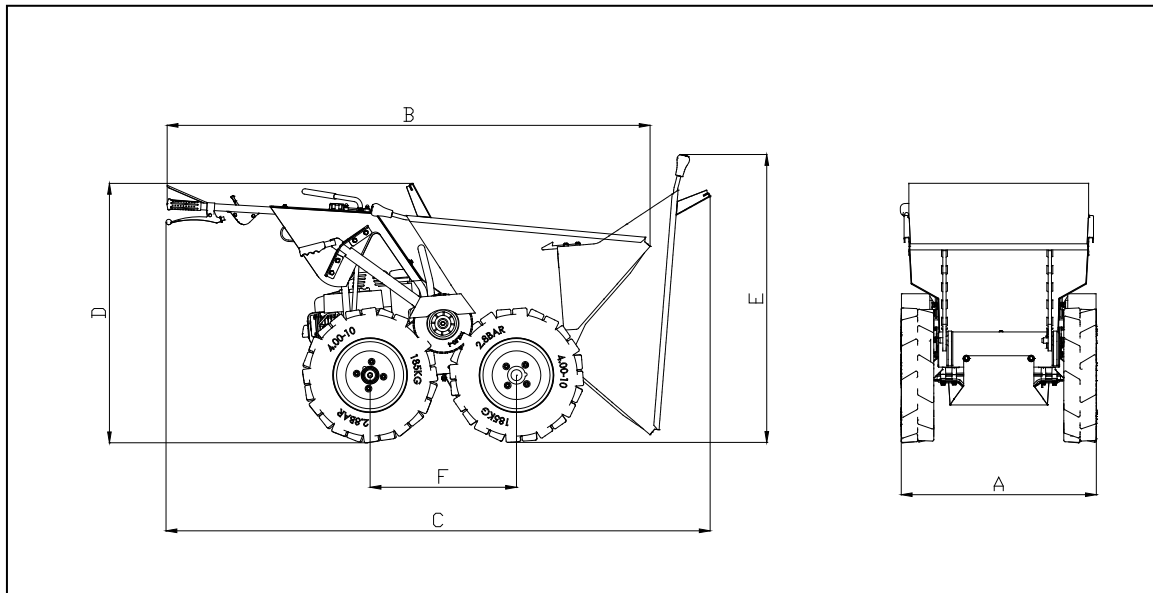
Routine Maintenance		Every 20 hours	Every 50 hours	Every 75 hours	Every 200 hours
Engine Oil	Change	✓			
Air Filter	Check Condition		✓		
	Clean / Replace				✓
Spark Plug	Change				✓

Engine Details	Oil Type	Quantity (Ltr)	Fuel Type	Capacity (Ltr)	Spark Plug Type	Electrode Gap (mm)
Gasoline Honda GXV160	SAE 10-30W	0.77	Unleaded	2.41	BPR5ES	0.07-0.08

Troubleshooting

Problem	Cause	Remedy
Terrain Loaders does not move whilst engine is running	Drive belt is not tight enough	Tighten drive belt
	Gear is not properly selected	Ensure gear lever is not inbetween two different gears.
Front wheels are spinning whilst 4-wheel drive is engaged	Under-inflated tyres	Inflate tyres to 50 PSI
Engine will not start	No fuel getting to engine	Fill fuel tank
		Open fuel valve
	Engine switched off	Switch on
	Spark plug fouled	Clean, check and reset plug gap
	Engine cold	Close choke
	Engine flooded	Open choke, fully open throttle, pull recoil starter until engine fires
	Cut out switch wire	Reconnect wire

Technical Data



Specifications	Terrain Loader
A - Machine Width (mm)	721
B - Machine Length (mm)	1787
C - Machine Length During Tipping (mm)	2013
D - Machine Height (mm)	958
E - Machine Height During Tipping (mm)	1064
F - Wheel Base	542
Engine Model	Honda GXV160 (5.5hp)
Engine Type	Unleaded Petrol
Max. Engine RPM	3000
Max. Travel Speed - Forward (km/h)	5.8
Max. Travel Speed - Reverse (km/h)	1.7
Bucket Capacity - Fill Volume (Ltr)	116
Bucket Capacity - Heaped Volume (Ltr)	137
Tyre Pressure (PSI / Bar)	40 / 2.8
Tyre Size (mm)	102 x 254
Tyre Pressure - Friction Wheel (PSI / Bar)	50 / 3.5
Tyre Size - Friction Wheel (mm)	90-100 x 225
Machine Weight (kg)	162
Max. Axle Weight (kg)	340
Max. Uphill Gradient	20°
Max. Downhill Gradient	20°
Noise Level (dB)	101

Warranty

Your new Hoppt Terrain Loader is warranted to the original purchaser for a period of one-year (12 months) from the original date of purchase. The Hoppt warranty covers defects in design, materials and workmanship.

The following are not covered under the Hoppt warranty:

1. Damage caused by abuse, misuse, dropping or other similar damage caused by or as a result of failure to follow assembly, operation or user maintenance instructions.
2. Alterations, additions or repairs carried out by persons other than Hoppt or their recognised agents.
3. Transportation or shipment costs to and from Hoppt or their recognised agents, for repair or assessment against a warranty claim, on any machine.
4. Materials and/or labour costs to renew, repair or replace components due to fair wear and tear.
5. The engine, air filter and the engine spark plug.

Hoppt and/or their recognised agents, directors, employees or insurers will not be held liable for consequential or other damages, losses or expenses in connection with or by reason of or the inability to use the machine for any purpose.

Warranty Claims

All warranty claims should firstly be directed to the local dealer, either by telephone, by fax, by email, or in writing.

Liability

HOPPT declines any liability for possible damages to persons and/or things, which might arise from improper or wrong use of the machine or non-observance of the operating instructions in this manual.

USE ONLY GENUINE HOPPT PARTS AND ACCESSORIES!

For your own safety, the safety of others and the life of the machine.

NOTES:



Uni-corp (Singapore) PTE Ltd

20 Ang Mo Kio Industrial Park 2A,
#03-02/03 AMK Techlink Singapore 567761



+65 6756 7688



+65 6756 7088



sales@uni-corp.com



www.uni-corp.com



2010
